



EAGLE CAP **Redefining Style, Comfort and Innovation**



DREAM DINETTE / BED

The Dream Dinette has no annoying table leg and easily makes into a comfortable additional bed.



RESIDENTIAL STYLED THEATER SEATING

Industry leading comfort and function with swing away multi-purpose tables.



LED TRACK LIGHTING W/DIMMERS

The Modern LED Lights save power and allow you the control the mood.



LED EXTERIOR SERVICE LIGHT

Great for loading at night, checking your connections or just adding some mood light .



HAPJIAC PULL OUT STORAGE TRAY

This lightweight, metal ball bearing tray provides quick, fuss-free access to your storage.



WINEGARD AIR 360 PLUS HD DOMED ANTENNA

This New Omni Directional Antenna provides reliable hands-free TV and radio reception.



3 Year Structural Warranty

Eagle Cap Campers provide a 3-year structural warranty. Appliance warranties vary and are set by their respective manufacturer. Please contact your dealer for complete details regarding warranty.



Complete Insulation

- Ceiling R-19
- Walls R-13
- Floor R-22
- 30,000 BTU Furnance
- Ducted Basement Heat
- True Themal Pane Windows
- Insulated Baggage Doors



DARE TO COMPARE

EAGLE CAP CONSTRUCTION

1. GEL-COAT AERODYNAMIC (Fiber Glass Front Cap)

No other camper is built with these structural components - tougher, stronger, and better sealed! This cap is designed to fit tightly and securely to the contour of our our camper and the gel-coat gives a beautiful two-tone finish, creating a high-end luxury look with better aerodynamics!

2. AIRCRAFT QUALITY WELDED ALUMINUM FRAME SUPERSTRUCTURE

We utilize 2x2 and 2x4 Aircraft quality aluminum framing plus Eagle Cap's exclusive TCC® bonding process to create a sturdy, durable structure. Your truck camper is built to last and will also come with our exclusive 3-year structural warranty.

3. EXCLUSIVE ALL SEASON SIX-STEP EXTERIOR SEALING PROCESS

Rest assured your truck camper has been sealed rigorously thanks to our 6-step sealing process.

1. All seams/joints sealed with construction adhesive/sealant.
2. One-piece fiberglass cap and seams are sealed with 3M Extreme Seal®.
3. Exterior finish trim is sealed with butyl seal, no putty tape that dries out.
4. Finish trim is then silicone sealed.
5. Exclusive – Reverse seal front seam seal system.
6. Exclusive – Channeled side roofing seal system.





4. EC MAX – MAXIMUM 4-SEASON INSULATION

Highest R-Values – We use closed cell block foam insulation and a TPO insulated roof, providing you with R-19 in ceiling / R-22 in the floor / R-13 in the walls. True thermal pane insulated windows, 1" insulated exterior baggage doors, easy access winterization valves, ducted heat with full basement heat and a 30,000 BTU furnace, all standard, making the Eagle Cap cooler in the summer, warmer in the winter, and easier to winterize.

5. LAMILUX 4000 GEL-COAT FIBERGLASS EXTERIOR WALLS

Lamilux 4000 fiberglass is not only a gorgeous, shiny, high-gloss finish but is also a thicker fiberglass providing you with a stronger, weather-proofing, exterior structure.

6. FRAMELESS - 4-SEASON TRUE THERMAL PANE WINDOWS

Not only are they beautiful, these windows are constructed as true thermal pane windows meaning they are 4-season insulated and will provide you with 40% more R-Values over a standard RV window used in other brands.

DARE TO COMPARE

Exclusive Features

- 3-Year Structural Warranty
- EC Max - 4 Season Insulated
- One Piece Fiberglass Front Cap
- TCC Construction® (True Composite Construction)
- All-Season 6-Step Sealing Process
- Reverse Trim TPO Front Roof Seal
- Channeled TPO Side Roof Seal
- Frameless TTP Windows True Thermal Pane
- 26" Entry Doors - Wider and easier access
- Modular Dinette Furniture (Select Models)
- Theater Seating Recliners - Optional
- 32" TV (Optional 1160, 1165, 1200)
- 72"x 84" Cal King Bed (1200)
- Grabber Catches on all Int. Cabinet Doors
- Soft Closing Drawer Guides
- 30,000 BTU Furnace
- Interior/Exterior Mood Light - LED
- 102" Wide Body Models - 1160, 1165, 1200
- Flame Treated Fabric
- 7cu ft Refer 811 and 8cu ft Refer 1160, 1165, 1200
- Large Stainless Steel Oven w/ Spark Ignitor Ignition (N/A 1200)

24 Standard Features

(Optional or Not Available on Other Brands)

- One Piece Fiberglass Cap
- Lamilux 4000 Ext Fiberglass
- Keyless Entry
- Stereo AM/FM/CD/DVD/Bluetooth/HDMI/ App Controllable w/ext Speakers
- Bedroom Skylight w/sceen
- Microwave
- Micro-Convection Oven (1200)
- Fantastic Fan
- Awning Slide Toppers
- Dual 12V / USB Charging Centers
- Frameless TTP (True Thermal Pane) Windows
- Taller Bath Skylights
- 4-Season Insulation - "EC-Max"
- 1" Insulated Ext Doors
- Water Heater By-Pass Valve
- Winterization Valve
- LED Lights - Interior & Exterior
- Digital Thermostat (A/C & Heat)
- Dream Dinette (N/A 1200)
- Sofa / Bed - (std 1160/1165/1200)
- Sealed Burner Cooktop
- Black Tank Flush System
- Phat Ladder®
- Stainless Steel Appliances
- Slam Latches - Ext Compartment Doors

*Also included in our base weights

Available Options

- 19" & 28" LCD 12V TV (Select Models)
- 32" LCD 12V TV (1160, 1165, 1200)
- Low Profile A/C w/Digital Wall T-Stat
- Comfort Step Bumper - w/Double Step w/ Reversed Treads (811 only)
- Generator Ready - Required w/Gen Opt
- Generator - 2500W Cummins/Onan LPG
- Jack Brackets - Swing Out (Req for Dually)
- 12v Power Patio Awning w/LED (1160,1165, 1200)
- 12v Power Rear Awning w/LED (811 only - n/a on 1160, 1165, 1200)
- Side Patio Awning - Box 811- 8',
- Roof Rack System-(Maggie w/Cross Bars)
- Solar Panel - 100 Watt w/Regulator
- Solar Panel - Additional (add 2-3)
- Theater Seating Recliners - w/Swing Away
- Tables (Replaces std Sofa in 1160, 1165, 1200)
- Water Filter - Drinking w/Separate faucet
- Wireless Backup Camera - HD Color

EAGLE CAP EXCLUSIVE & INDUSTRY LEADING INTERIORS

BUILT LIKE NONE OTHER

The dinette seating is modular in design (select models) meaning the standard Dream Dinette® sections are designed to be removed and replaced with any of our other exclusive features like a Sofa Bed or our Theater Seating Recliners. All of these features are built to the same dimensions making them completely interchangeable.

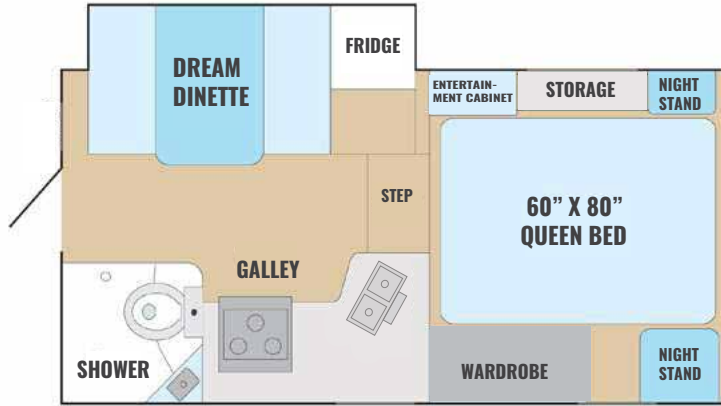
You can also choose to order your Eagle Eagle Cap without the dinette and instead add other aftermarket items such as a desk, bunk bed, etc.



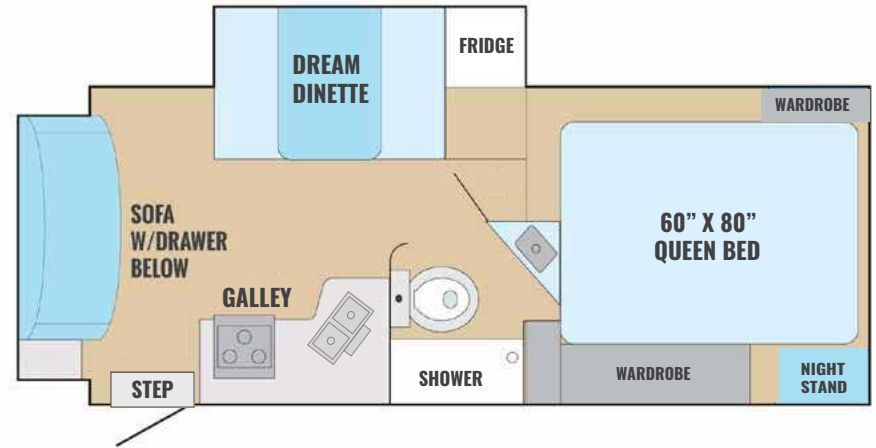
Toffee Latte Decor

EAGLE CAP'S LUXURY SINGLE, DOUBLE & TRIPLE SLIDE FLOOR PLANS

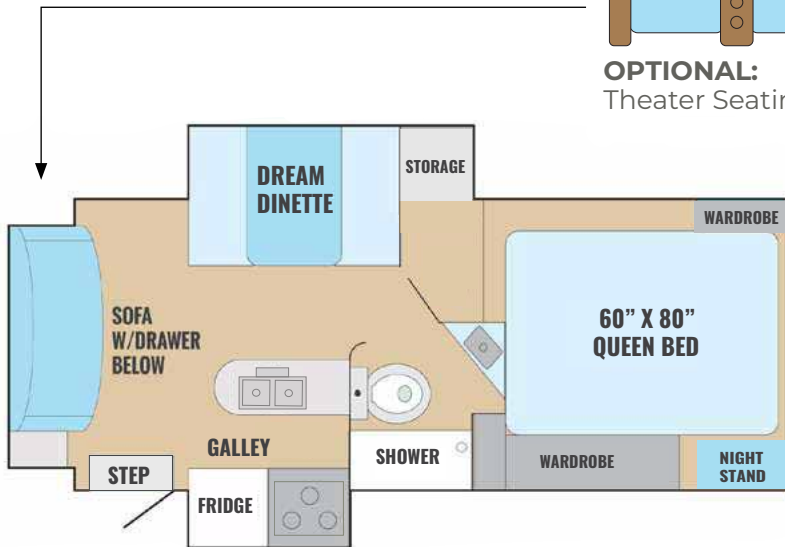
811 Fits SB and LB Trucks (6' to 8' even w/Generator)



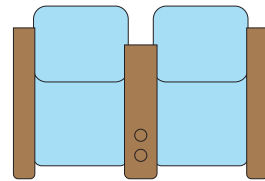
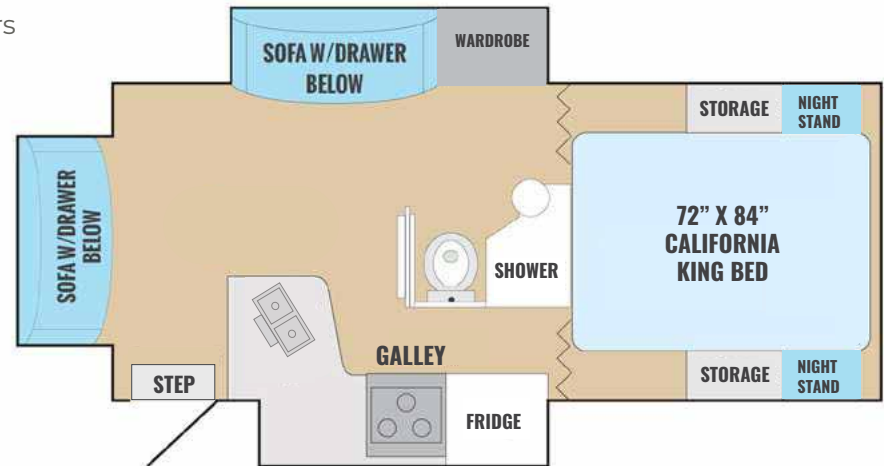
1160 Fits LB (8') Dually and 1-Ton Trucks



1165 Fits LB (8') Dually and 1-Ton Trucks



1200 Fits LB (8') Dually and 1-Ton Trucks



OPTIONAL:
Theater Seating Recliners

WEIGHTS AND MEASUREMENTS

Weights & Measures	811 Single Slide	1160 Double Slide	1165 Triple Slide	1200 Triple Slide
Standard Sleeping Capacity	4	6	6	6
Floor Length	9'3"	11'11"	11'6"	12'3"
Exterior Width (inches)	96"	102"	102"	102"
Exterior Overall Length (Nose to rear ladder)	17'4"	21'1"	21'1"	21'3"
Exterior Height (Floor to top of A/C)	106"	112"	112"	112"
Interior Height (inches)	78"	76"	76"	76"
Dinette Size (inches)	43"x69"	42"x66"	42"x66"	N/A
Fresh Water Capacity (US Gallons)	44	66	66	66
Grey Water Capacity (US Gallons)	34	41	41	34
Black Water Capacity (US Gallons)	34	41	41	34
Hot Water Capacity (US Gallons)	6	6	6	6
Refrigerator Size (Cubic Feet)	7	8	8	8
Dry Weight (LBS)	3380	4659	4917	4870
COG (Center of Gravity inches)	42"	57.5"	61.5"	59"

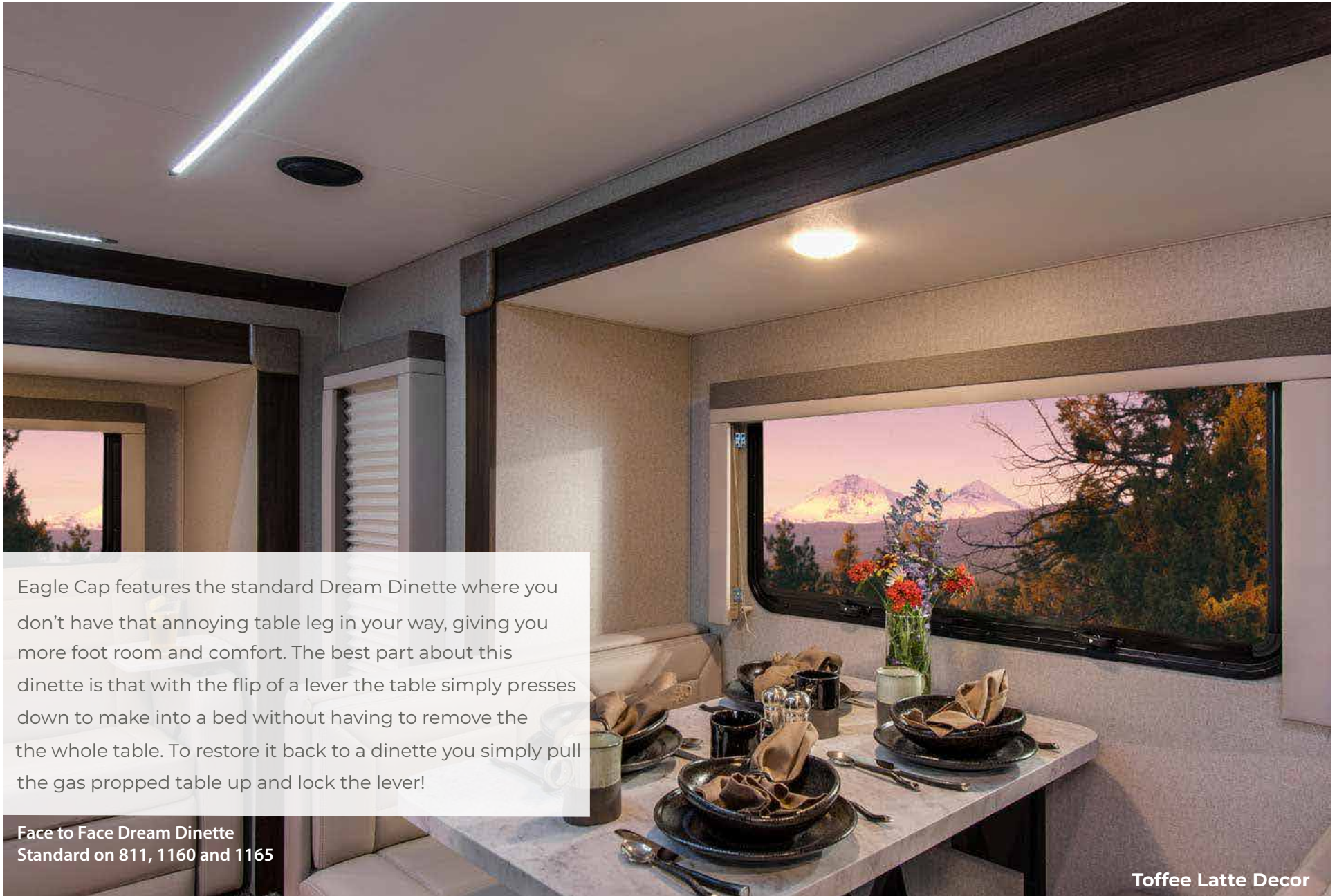
See "Truck Camper Guide" on Page 13 for Matching a Truck to a Camper

Note: Eagle Cap's policy is one of continual improvement and reserves the right to make changes to all features and/or options at our discretion without prior notice and without incurring any obligation. Photos may not be of the current model year or interior color. Please confirm all options and details with your dealer and/or an Eagle Cap representative before ordering or making a final buying decision.



Steel Desert Decor

ROOMY CAMPERS WITH LARGE DREAM DINETTES



Eagle Cap features the standard Dream Dinette where you don't have that annoying table leg in your way, giving you more foot room and comfort. The best part about this dinette is that with the flip of a lever the table simply presses down to make into a bed without having to remove the whole table. To restore it back to a dinette you simply pull the gas propped table up and lock the lever!

Face to Face Dream Dinette
Standard on 811, 1160 and 1165

Toffee Latte Decor

EXCLUSIVE LARGE GALLEYS



The 1160 Galley enjoys large cabinet storage, stainless steel appliances, large counter top area, an undermount stainless steel sink, a grated cooktop with a large oven below. The 32" LED 12V TV and the Separate Filtered Drinking Water Faucet are optional additions.



The Eagle Cap 1200 features the largest galley in the industry. This model comes with abundant storage and even more counter space. Notice the 3 burner cooktop with three large drawers just below and the 30" stainless steel convection microwave above. When you add the pull-out pantry and the 8 cu ft refrigerator, the 1200 Galley feels more like an apartment than a truck camper.



The Eagle Cap 811 single slide also features a roomy galley with abundant overhead cabinet storage and plenty of counter space. The stainless steel appliances give a modern look and accent this open concept floorplan. This model gives you the largest floor space in a single slide truck camper.

LUXURIOUS QUEEN & CALIFORNIA KING BEDROOM SUITES



The 811 Eagle Cap has a roomy, luxurious Queen Bedroom Suite with dual bedroom windows for that cool, cross ventilation, a Dual Door Wardrobe and an exclusive Camper Caddy Storage system.



The Eagle Cap 1200 features an exclusive California King Bedroom Suite (72"x 84") with dual access from both sides, a designer mattress cover, a large wardrobe, and 12v/USB Charging Port.

TRUCK CAMPER GUIDE

MATCHING A CAMPER TO A TRUCK

When purchasing a Truck Camper, there are a few important factors to consider.

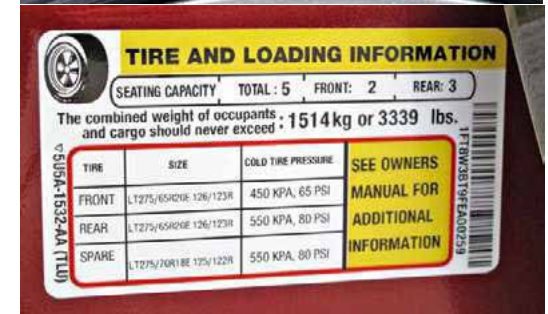
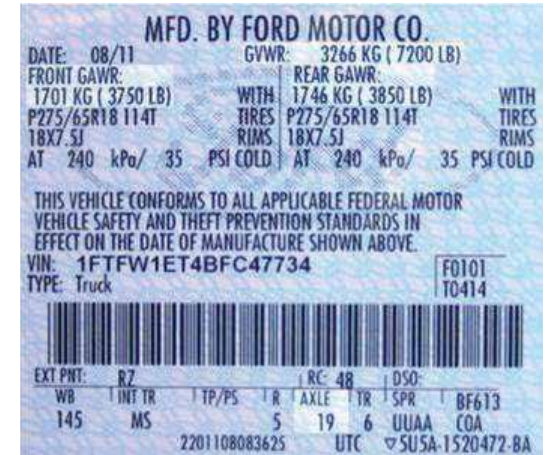
The Payload Capacity

You can sometimes find this posted in the glove box of your truck. If not, another way to determine payload capacity would be to weigh your truck full of fuel and people (don't forget the dog!) and then subtracting that weight from the GVWR posted on the door of your truck (see example to the right). That difference would equal your payload capacity which is the weight of truck camper you can carry. For example, if your truck weighs 6800lbs and the GVWR on the door reads 9900lbs, your payload would be 3100lbs (9900lbs-6800lbs=3100lbs).

GVWR (Gross Vehicle Weight Rating) Refers to the maximum weight the manufacturer rates their truck to carry, including the weight of the truck and all people, cargo, fuel etc.

GAWR (Gross Axle Weight Rating) Refers to the maximum rating the manufacturer rates the axles to carry. These ratings are usually posted on the driver's side door post. To determine these ratings on your truck with cargo (camper), weigh your truck with just the front and then just the rear axle on the scales. This will give you your axle weights for your truck with your camper. This weight should fall within the manufacturers axle ratings.

Tire Capacity (Rating of your Tire) Can be found in tiny fine print on the sidewall of your tire (refer to photo to the right). It's usually just behind the tire inflation number and will usually be a direct correlation to the axle ratings and GVWR on new trucks. This will always be your weakest link in your weight carrying capacity and should always be checked before carrying any load, including a passenger car for that matter. **SAFETY ALERT** – Always make certain you choose tires with the proper load capacity to handle whatever load you are carrying with your vehicle. Another way to determine payload is from the tire sticker on the door post of your truck (right). This sticker is added on newer trucks.



TRUCK CAMPER GUIDE

COG (Center of Gravity) Also known as Center of Balance, COG is the point where the weight of your camper is balanced. We note the COG on every camper with a large red arrow which is determined as it is weighed and balanced post-production. Your camper COG should fall into the “Load Range” of your truck (see your owners manual for this measurement). As you can see in the example to the right, the COG of this camper easily falls into the load range of this truck. As the owner, it is your responsibility not to exceed the weight or COG specifications of your truck when purchasing a truck camper. Remember safety first before loading a camper on your truck. If you require any assistance, consult your dealer who can help you select aftermarket items designed to aid the combination.



Suspension Enhancements These allow you to manage your load but do not change or add to a trucks GVWR. If you upgrade your truck and then have it inspected by a DOT (Department of Transportation), you may be able to increase your “legal” GVWR. Check with your local licensing agency for details in your area.



Torklift Stable Loads This is a product we recommend and use. Today's truck manufacturers market trucks to be our everyday driver and thus want the empty loaded truck to be as smooth a ride as possible. To accomplish this they lower the overload spring (the heavy weight bearing springs) from 3" to 4" lower to give that smoother ride when empty. The problem with this is when you add any weight to the truck it appears to be sitting low in the rear or “overloaded” due to the drop. Stable Loads by Torklift simply fill this space so that as soon as you add the load the weight immediately sets on the overload springs, allowing your truck's suspension to do what it is designed to do, which is to carry a load and truck camper in this case.



Air Bags We use and recommend air bags in the correct application. Some truck manufacturers recommend airbags in all applications and suggest you inflate them 80 to 100 lbs in the bags. We don't recommend that air bags to be used in this way because in too many cases this will raise your camper up off of the suspension causing you to have a spongier, unsafe ride. If you choose air bags, we only recommend you inflate them so that you are just touching the overload springs of your truck for the best ride and handling characteristics.

TESTIMONIALS

“Your company makes, in my opinion, the best camper on the market today!”

“We have had many R.V’s & have viewed an abundance of truck campers critically! We’ve hashed over a variety of campers for over 2 years before making our decision, by dissecting them in every way possible...Adventurer products with the storage & drawers galore, accessibility to areas needed, beautiful cabinetry/decor, large baths, large fridge, ext. deck & comfort steps ETC!!! Maury was looking for a camper to fit our shot box truck yet met all of my criteria too etc!” - **Sharon & Maury**

“You guys are doing things right.”

“Your campers really stand out from the crowd with all the innovative features, floor plans, and options. King beds, rear kitchens, etc. have drawn us to your brand as well as the construction and warranty. I wish I had a dually so I could get the 1165 model. A kitchen island in a camper, seriously... You guys are doing things right. Thank you again” - **Jason**

“Thanks for all the support and answering my questions.”

“Congratulations men very nice camper. Can not wait to get mine. Selling like hotcakes. Thanks for all the support and answering my questions.” - **Harley**

“The tour helped cement our decision to purchase a Eagle Cap 1165.”

“We are writing to thank you for the great factory tour you gave us late on a Friday afternoon October 3. The tour helped cement our decision to purchase our Eagle Cap 1165. We were impressed with virtually every step of the design and build process. We look forward to using the camper on many adventures.” -Sincerely, **Bruce & Barb**

“You stand out in the world of manufacturers”

“In our search for our Pickup camper we are blessed with God’s guidance in each step of the way. In your statement regarding the enjoyment of traveling and enjoying the wonder of God’s creation we appreciate your “witness” in words. Your campers stand out in all the searching and comparison shopping we have done. Thanks for your company, you stand out in the world of manufacturers, in all areas” - **Ken and Peggy**

“I was impressed with the info I got off your website!”

“I don’t normally answer emails like this but I was impressed with the info I got off your website. I am just starting to look at options for a new/newer RV and I thought your website was super useful.” - **Dan**



Manufactured by
Adventurer Manufacturing
3303 West Washington Ave
Yakima, WA 98903 PH: 509-895-7064
A Premium RV Manufacturer since 1969

Factory Tours Welcomed!

We invite you to visit our facility for a tour where you can see the Eagle Cap Truck Campers being assembled with tremendous pride, skill, and exclusive techniques. Eagle Cap is **“Build Like None Other”**

Tours available by appointment.

*Please call for more details or to book your tour.
See ya soon!*

www.eaglecapcampers.com